



#### CONDITIONS OF SALE

The material is guaranteed to be of standard quality and to conform to our published specifications. Since we have no control over use and application of this material, nor the areas to which it is applied, we disclaim any and all responsibility or warranties, expressed or implied, in connection with it's use, handling and storage or the results obtained; as well as any injury, damage of any nature whatsoever , resulting from its uses.

The information provided in this brochure is to the best of our knowledge however we recommend that all applicators take part in our training to fully understand the limits and abilities of our products as there are many factors which can affect the overall finish and quality of the job.

## Chemical Stain

March 2018

Permacolour Chemical Stain lets you create colours with real depth that are unique and captivating. Thousands of different looks can be achieved ranging from the understated elegance of burnished leather to the ageless beauty of natural stone. Chemical Stain will open the door to a whole new palette of creative expression.

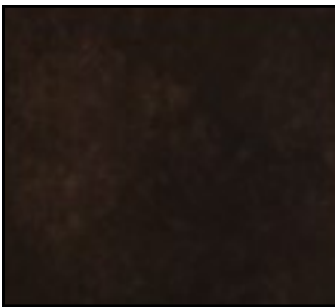
### PERMACOLOUR Chemical Stain applied to WHITE Micro Topping



JADE



TURQUOISE



EBONY



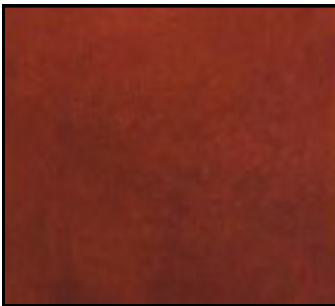
COBBLESTONE



COFFEE



CARAMEL



MAHOGANY



WALNUT

*\*\*Due to the printing process, Chemical Stain Colours may vary\*\**

*New Zealand Decorative Concrete Supplies*

*is a private company, 100% New Zealand owned and operated, providing the highest quality products and service in the decorative concrete industry!*

**HEAD OFFICE** 42a Egmont Road, PO Box 7022, New Plymouth,  
06 755 3320, info@permacolour.co.nz  
**FREEPHONE 0508 444 555**

**AUCKLAND WAREHOUSE** Unit 4-16 Zelanian Drive, East Tamaki, Auckland,  
09 272 8444, auckland@permacolour.co.nz  
**FREEPHONE 0508 666 777**

**CHRISTCHURCH OFFICE** 25a Sheffield Crescent, Burnside,  
PO Box 39148, Harewood, Christchurch, 03 358 9669,  
christchurch@permacolour.co.nz

#### Manufacturers & Suppliers of

Concrete Colourings  
Concrete Coatings & Additives

Concrete Tools

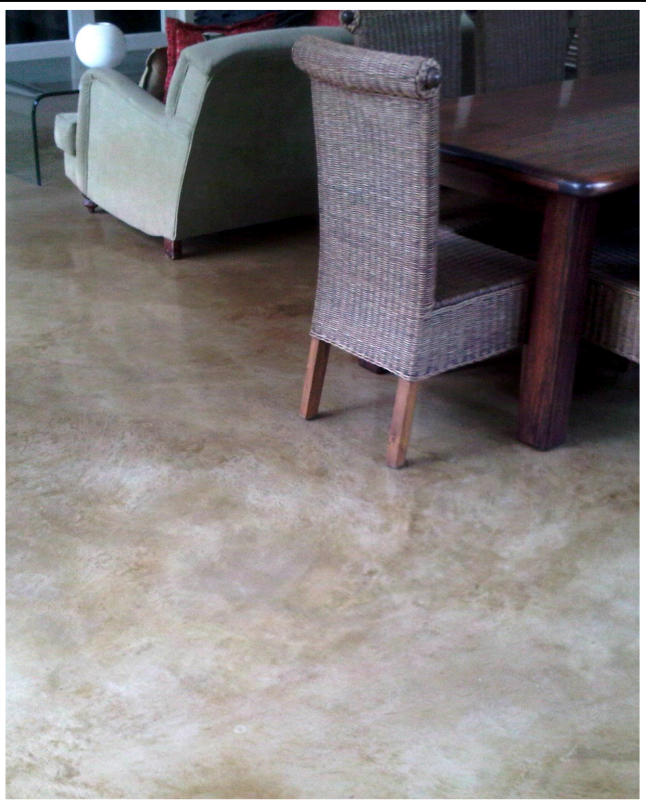
Imprinting & Overlay

Products & Equipment

Oxides & Sealers

Training

[www.permacolour.co.nz](http://www.permacolour.co.nz)





## Chemical Stain

### DESCRIPTION

Permacolour Chemical Stain is a blend of acids, metallic particles and special additives which when applied to concrete, penetrate the surface to combine chemically with elements in the concrete to form oxide, thereby producing interesting variations of the chosen colour. The result is an aesthetic, mottled appearance, dark in places, light in others, with subtle shades of each, which cannot peel or flake.

The shade of colour obtained will be distinctly different when stain is applied to old or new concrete. The initial colour of the concrete before the stain can also affect the finished appearance. Application of additional stain to lighter areas will not necessarily change the disparity of shading.

### PURPOSE

Permacolour Chemical Stain allows you to create colours with real depth that are unique and captivating. Thousands of different effects can be achieved, ranging from the understated elegance of burnished leather to the ageless beauty of natural stone. Chemical Stain will open the door to a whole new palette of creative expression. It will not produce a uniform coloured or painted effect and should not be used if that is the look desired.

### SPECIFYING

Apply Permacolour Chemical Stain to cement surfaces by brush, sponge or spray method. After a minimum of four hours remove all residue by flushing thoroughly with water. Use Permacolour Neutraliser in the final rinse. Allow to dry and seal, all in accordance with the manufacturers specifications.

### SUITABLE SURFACES

- New external concrete surfaces which have cured for at least 7 days.
- Old existing concrete surfaces.
- Plastered, but unpainted wall surfaces.

- Existing unsealed Permacolour Micro Topping, Cement Paint or Decorative Overlay (to create more interesting shades, colours or patterns).
- Internal concrete that has cured for at least two months.

### SURFACE PREPARATION

**Old Surfaces:** Surfaces should be firm and free from loose material. Previous coatings such as paint, sealers, curing agents, wax or petroleum based materials, must be completely removed. Organic growth should be removed by brushing with a solution of 1 part household bleach (sodium hypo chloride) and 3 parts water. Allow 12 hours to kill the spores and then remove with a wire brush and flush with water. For best results apply micro-topping first to provide a new uniform substrate to receive chemical stain. Allow the micro-topping to cure before applying Chemical Stain.

**Internal Floors:** Power floated, hard trowelled surfaces do not stain well and should be sanded or lightly ground first.

### MIXING

Chemical Stain can be diluted with water if lighter shading is required.

### WEATHER

Do not apply to exteriors if rain is expected.

### APPLICATION

If applying the stain at full concentration, the surface which the Chemical stain is going to be applied to must be wet down (not dripping or pooling) prior to application. If the Chemical Stain is being diluted the surface does not need to be wet down prior to application.

Apply with an acid resistant paint brush or spray canister; ensuring that adjacent areas are protected from overspray and spills. Avoid splashes, puddles and dry joints by maintaining a wet edge and by applying continuously between architectural features. Application by brush, broom, squeegee, pour, roll, sponge or spray, will create different effects.

- When applying by brush apply the stain liberally to a section no larger than can be covered by the wet brush. Spread evenly in a consistent manner.

## PRODUCT INFORMATION SHEET

- When applying by sprayer, spray in an even manner avoiding overlaps, dripping and puddles.

Allow a minimum of 4 hours for the stain to work, then scrub well with Permacolour Concrete cleaner diluted with water. Use Permacolour Neutraliser in the final rinse to stop the chemical reaction.

Avoid excess rinse water running over other concrete areas as this can cause unwanted staining to these areas. If a darker effect is wanted, reapply until desired results are achieved. Remember that the “wet look” will simulate the “sealed look”.

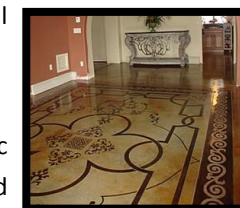
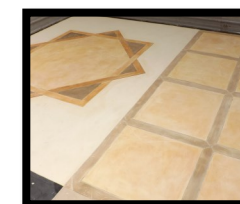
### SAFETY WARNING

Chemical Stain contains dilute hydrochloric acid. Treat with caution. Store away from heat and direct sunlight. Protective work wear including; rubber gloves, safety goggles and rubber apron should be used. Use only plastic or steel equipment and attachments.



### DESIGNER FLOORS

- Transfer the desired pattern / image to the floor using a tape measure and chalk line.
- Create demarcations using a small grinder or scribe (2mm depth)
- Apply Chemical Stain to specific areas using a paint brush and sponge.



- Décor stencils can also be individually designed. These are placed on the floor and stain is applied in the exposed areas, the stencils are later removed.

### COLOURS

- Permacolour Chemical Stain is available in eight distinctive colours. For other colours that may be available, contact Permacolour on **free phone 0508 444 555**.

- Turquoise and Jade should not be used on slag concrete or in areas subject to water from the subgrade or standing water. These conditions will darken or blacken the stained surface. When using these colours they should be considered for interior surfaces where the subgrade is well drained and free of hydrostatic pressure.



- One colour may be applied over another colour to create interesting colour blends.

### SEALING

**External Floors:** 2 coats Permacolour Concrete Sealer with minimum 6 hours between coats. Application by synthetic lambskin roller.

**Internal Floors:** 2 coats Permacolour Ureglaze with minimum 10 hours between coats. Application by “strong solvent” roller.

### COVERAGE

Varies from 5-15 square metres per litre, depending on suction and method of application.

**PACKAGING:** 2 litre and 5 litre plastic containers.

### DISCLAIMER

Whilst any information contained herein is true, accurate and represents our best knowledge and experience, no warranty is given or implied with any recommendations made by us, our representatives or distributors, as the conditions of use and the competence of any labour involved in the application are beyond our control.

As all Permacolours technical data sheets are updated on a regular basis, it is the users responsibility to obtain the